



## CX3000 X-Ray

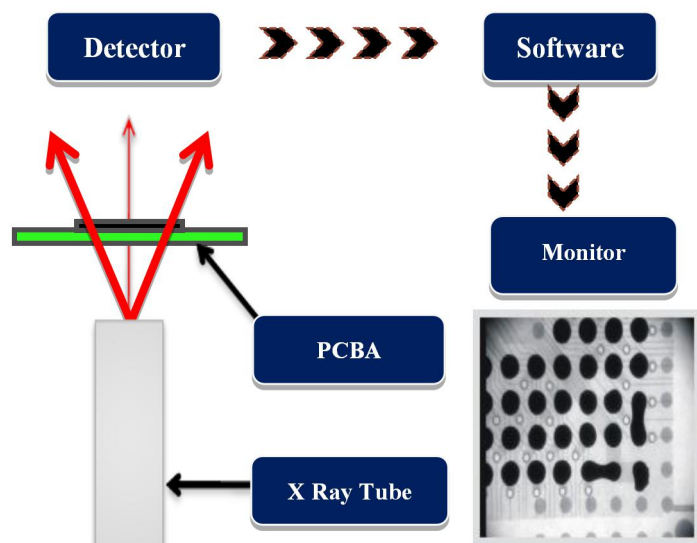
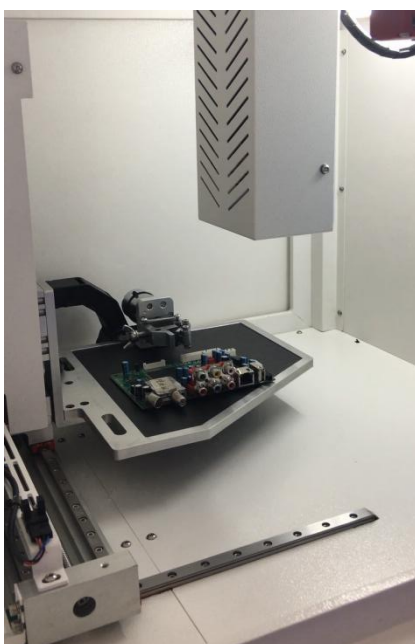
### Application

SMT, BGA, CSP, Flip Chip, LED Detection, Semiconductor, Packaging components, Battery Industry, Electronic components, Automotive parts, Photo-voltaic, Aluminium Die-casting, Moulding Plastic, Ceramics, other special industries.

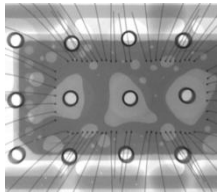


### Features

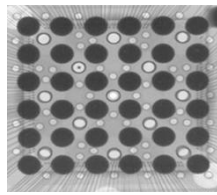
- 90kV 5 $\mu$ m closed X-ray tube
- High resolution FPD with 3-axis motion system, meet basic inspection demands
- Navigation in windows, target tracking conveniently
- Max. loading area 440mm $\times$ 400mm, max. inspection area 420mm $\times$ 380mm, with 360X Magnification



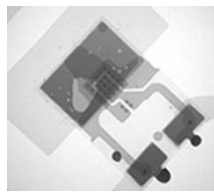
## X-Ray Inspection Images



IC wire



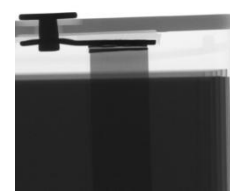
BGA Voids



LED



Connectors/Cables



Lithium Battery

Item	Description	Specifications
<b>X-Ray Tube</b>	Max. Voltages, Type	90kV, Closed
	Power Consumption	8W
	Focal Spot Size	5 μm
	Magnification	360X
<b>Detector</b>	Detector Type	FPD
	Resolution	101 LP/cm
	Effective Area	58mm×54mm
<b>System Computer</b>	Operating System	Industrial PC, Win 7, i7 Processor
	Monitor	22" LCD
<b>Software</b>	User Interface	ETA Multi-function DXI image processing system
<b>Working Platform</b>	Max. Loading Area	235mm×205mm
	Max. Inspection Area	165mm×190mm
	Max. Loading Weight	5kg
	Movement Control	Joysticks, Mouse and Keypads
<b>Navigation</b>	Rotation	Option 360° tilt fixture
	Camera	HD Camera, Laser point
<b>Axis</b>	Manipulator	3-axis with X / Y / Z
<b>Equipment Features</b>	Power Supply	AC 110~220V (±10%) 50Hz, 1kW
	Outline Dimensions	750(L)×570(W)×890(H)mm
	System Weight	300 kg
<b>Optional Accessories</b>	1.Barcode Scanner; 2.Dimension Measurement Gauge	
<b>Warranty</b>	One year warranty , free replacement the parts due to original manufacturer's defect, but expect of man-made damages and force majeure	

**X-Ray Safety:** All X-ray machines manufactured by ETA Technology meet the FDA-CDRH Regulation CFR 21 1020.40 Subchapter J for cabinet x-ray systems. The FDA - CDRH standard for cabinet x-ray systems states that radiation emission will not exceed. 5millirem a /hr.2"from any external surface. Our machines ( **Leakage <math><1\mu\text{Sv/h}</math>** ) are typically 5-10 times less than the international standards,