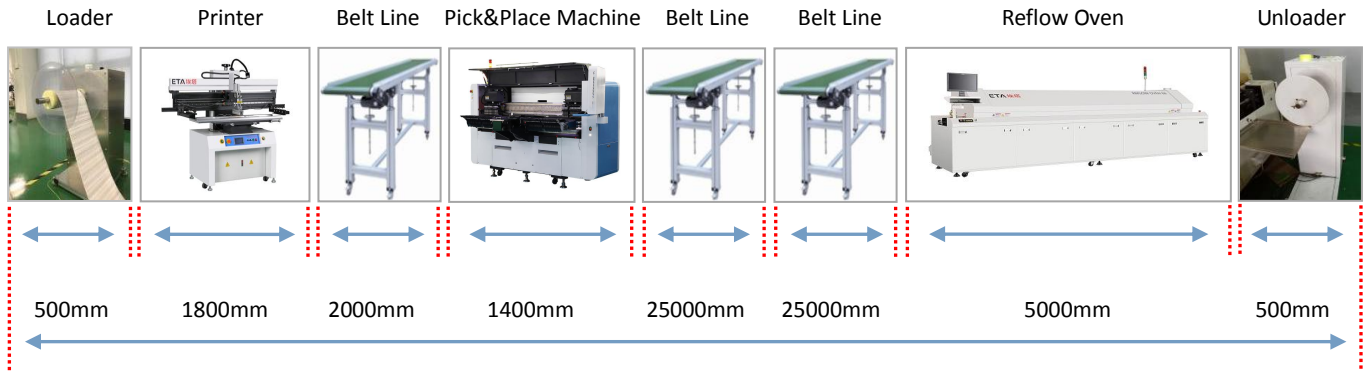


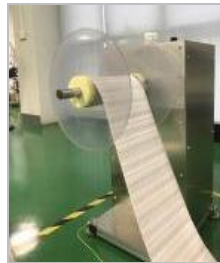
ETA LED Strip SMT Line Solution

LED Strip SMT Line:



Total Width:2500mm, Total Length: 61200mm

Loader



- 1.Strong,firm and stable design.
- 2. Simple, convenient and doesn't take up space.
- 3.Adjustable speed.

Dimension(mm)	500*450*950
PCB Width (mm)	50-350mm
Time Feed PCB	0-1500mm/sec
Power	Max 200 VA
PCB Direction	L to R
Power Supply	1 PH AC 220V 50/60Hz
Weight	120 Kg

Printer



- 1.Using linear guide-ways,matching motor drive speed , ensure the printing stability and precision.

2. Blade pressure and printing speed is adjustable, precision pressure gauge, speed controller display.
3. Suspension blade system makes printing more evenly.
4. Modular universal bench, thimble random placement , easy conversion.
5. With alignment device for PCB board and frame.
6. Work with both single-sided and double-sided PCB boards.
7. Auto printing , stable and efficient printing quality.

Model	P12 Printer
Accuracy	+/- 0.05mm
PCB Size	1200 x 350 mm
Platform size	1350 x 400 mm
Stencil Size(mm)	370*470,550*650,1500*650
PCB Thickness	0.2 - 6 mm
Stencil Poitioning	Manual
Cycle Time	< 12 Sec.
Power Consumption	220 W
Power Supply	1 -PH, 220VAC 50/60HZ
Air Pressure	4.5-6 kg/cm
Squeegee Speed	0-1500mm/sec
Dimension	1660x750x1650 mm
Weight	356 Kg
Squeegee Length	250mm
Platform Height	950mm

**Belt Line**



1. PVC belt and plate, Seamless
2. Taiwan motor(2HP) and 80# Retarder, inverter made by adlaspower, speed range 0-5m/min.
3. 80x80mm aluminium product, rail by 40x60mm aluminium, lantern support by 40x40mm aluminium.

PCB Direction	L to R
Speed	0-1500mm/sec
Drive system	Taiwan Motor
Dimension	2000*450*900 mm
Weight	160 Kg
Power	Max 200 VA

Pick and Place Machine Max-50



Features:



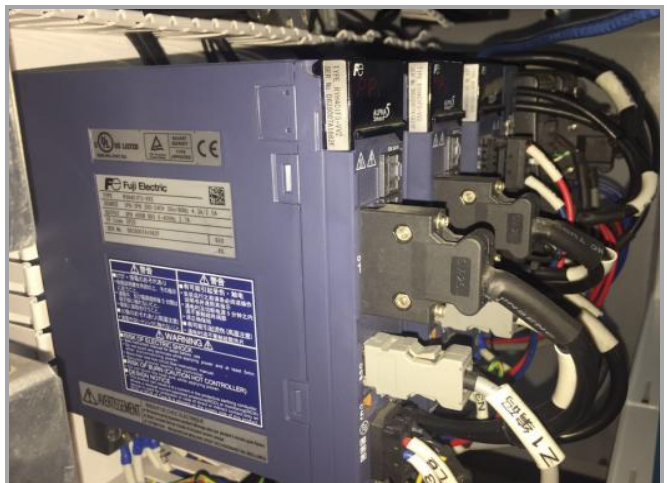
Mount system

18\*2 pcs high-speed heads, high-speed guide rail can ensure high precision mounting, Magnetic suspension linear motor driver. The nozzle position can be adjusted flexibly.



Driver system

Castings are used to ensure the stability of the machine. Linear motor is adopted. The grating ruler and code reader imported from Britain ensure the accuracy and stability.



Feeding system

Fast plug-in interface, millisecond signal transmission. Guide groove design, easy to install. Electric motor feeder ensures high precision and high stability feeding.

Control system

Googoltech high precision control card, Japanese and Korean servo controller, ensure high precision of transportation, mounting and transmission.

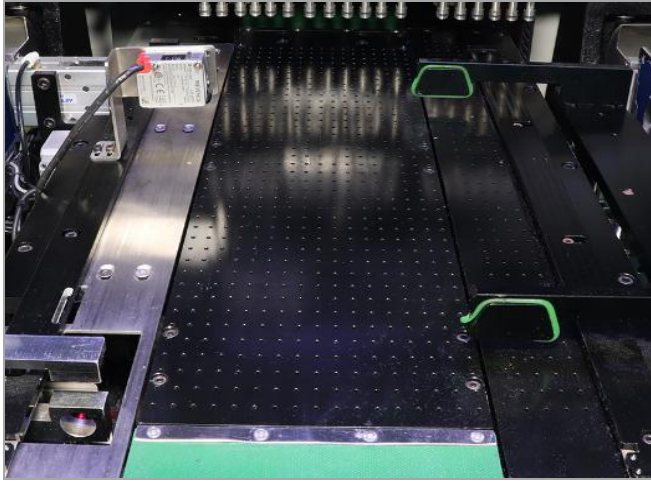
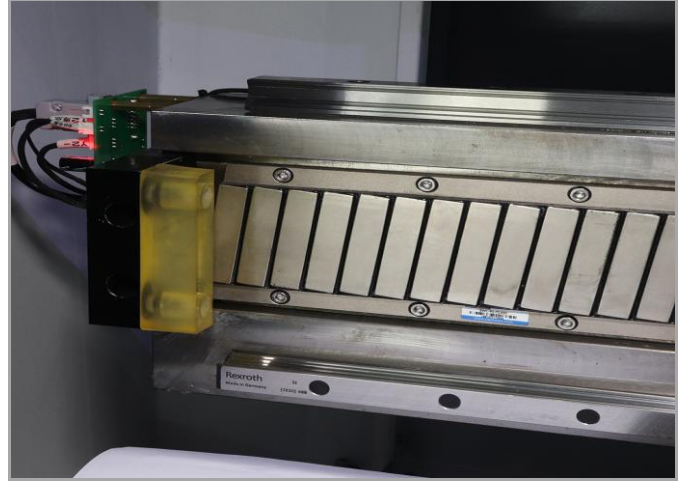


Table system

High precision screw support platform ensures PCB stable, motor driving life is high, which is conducive to follow-up maintenance, suitable for different PCB types.



Sprocket system

Germany Rexroth guide rail Y axis, Korea NS SYSTEM Maglev Linear Motor, Ensure repeat precision and high speed, Stable performance, zero maintenance, easy maintenance.

1. ETA strip pick and place machine is dedicated to assemble LED FPCB with infinite length, cater to the trend of FPCB in LED industry.
2. Tow modules and 54/72 electric feeders, can mounting three/four kinds of components at the same time, and the capacity won't be effected by the ratio of chip to resistance.
3. Adopt special accuracy and smooth input FPCB ways, which can solve the issue of input deviation, meet the demand of mounting RGB.
4. Adopt imported linear motor and grating ruler to locate the position, make sure the machine mounting with high speed and high accuracy. We promise to provide 2 years guarantee for the linear motor.
5. Integrated machine frame, welded into a whole by industrial class steel tubes and panels, greatly increase the machine's stability.

Materials List:

No.	Item	Brand	Original
1	Linear motor	NS SYSTEM	Korea
2	Linear Guideway	REXROTH	Germany
3	Servomotor & driver	FUJI	Japan
4	Code reader	RENISHAW	UK
5	Grating ruler	RENISHAW	UK
6	Motion control card	Googoltech	China
7	CCD Camera	SENTECH	Japan
8	Software	ETA	China
9	Power	MW	Taiwan
10	Controller	Schneider	France
11	Bearing	NSK	Japan

12	Soft Cable	IGUS	Gemany
13	Tanks chain	IGUS	Gemany
14	PC	LENOVO,DELL	China,Gemany

**Specification:**

Head Number	2
Nozzle Number	18*2=36
Feeder Number	18*4=72
Feeder	Electrical
Vision System	5 set CCD
PCB position	CCD
Max.PCB Size	5m-100mx255mm(Infinite length)
Max.Speed	150000CPH(150k)
Actual speed for Strip	90000-120000CPH
Placement Accuracy	±0.01mm
Component Range	0805,1206,2835,3014,3528,5050,5630,5730,RGB and other LED strip light
Component Height	13mm
Min mounting distance	12.5mm
Conveyer Speed	320mm/s
Conveyor Method	Vacuum and Belt
Y Axis Driver	Maglev Linear Motor
Mounting Type	Group Picking,Group Mounting
Electric Supply	220V AC/50Hz/
Power Consumption	3kw
Air Pressure	4.5-6 kg/cm
Dimension (L*W*H)	1500x2650x1650mm
Weight	Approx.2250KG

**Belt Line 2&3**

- 1.PVC belt and plate, Seamless
- 2.Taiwan motor(2HP)and 80# Retarder, inverter made by adlaspower,speed range 0-5m/min.
3. 80×80mm aluminium product,rail by 40×60mm aluminium,lantern support by 40×40mm aluminium.

PCB Direction	L to R
Speed	0-1500mm/sec
Drive system	Taiwan Motor
Dimension	25000*450*900 mm
Weight	160 Kg
Power	Max 200 VA

**Reflow Oven**



**Features:**

- 1.Control System: PC + Siemens PLC control system,accurate temperature control and more stable,ensures temperature stability rate to be more than 99.99%.
- 2.Hot air system: first-class heating module, the best temperature zone interval design makes optimum temperature uniformity and repeat.The effective utilization and thermal compensation efficiency,it needs less than 20 minutes from temperature control accuracy  $\pm 1\text{ }^{\circ}\text{C}$  ambient temperature to a temperature stabilization .
- 3.Monitoring Software:Windows interface, traditional and simplified Chinese and English online free switch, and operator password management, easy to operate.Operation records, temperature curve measurement and analysis functions, virtual simulation, fault self-diagnosis, process monitoring, automatic generate and save process control documents, substrate transport dynamic display.
- 4.Cooling System: new cooling zone, quick and easy adjustment, easily reach the cooling requirements of different slopes.
- 5.Temperature protection:ETA using third-party over-temperature protection, multiple layers protection to ensure safe operation.
- 6.Products comply with CE, CCC, UL , other standards and specifications.
- 7.User-friendly design: fault detection (such as heaters abnormal alarm, etc.), regular maintenance reminders, the economy functions and tool-free maintenance, reducing equipment failure rates.
- 8.Heating module: Transverse reflow design makes temperature from each zone is not influenced by neighbour to ensure accurate temperature curve, while ensuring a high production capacity and heat exchange capacity to achieve high adaptability (to meet the soldering of automotive, communications, electronics, computers and mobile phones consumer electronics.)

**Specification:**

S - Standard, O - Option, M - Manual, A - Auto, N/A - Not Available)					
Specifications	E8	E10	Specifications	E8	E10
Dimension (L*W*H)mm	5000x1250x1490	5800x1250x1490	Ups	S	
Standard Color	Computer Grey		Conveyor Direction	L→R (Option: R→L)	
Weight	Approx1600KG	Approx.1800KG	Computer	Lenovo	
Number Of Heating Zones	Up8/Bottom8	Up10/Bottom10	Max.Width Of PCB	400mm	
Length Of Heating Zones	3121mm	3891mm	Temperature Deviation	$\pm 1.0^{\circ}\text{C}$	
Rail Width Adjustment	M(option:A)		Length Of Cooling Zones	600mm	
Exhaust Volume	10M <sup>3</sup> /minx2 Exhausts		Center Support	O	

Control System	PLC+Computer		Temperature Control Precision	± 1.0°C
Temperature Control Method	PID + SSR		Max. Temp. Gap Between Preheat Zones	40°C
Transmission Agent	Chain + Mesh		Temperature Alarm	S
Electric Supply Required	3phase,380V 50/60Hz		Siemens PLC	S
Power For Warm Up	55KW	64KW	Lubrication Auto-Afflux	S
Power Consumption	8KW	12KW	On Line Editing	S
Warming Time	Approx.25 minute		Temp. Thermocouple Slot	S
Temp. Setting Range	Room Temp.-- 300°C		Rail Number	1 Lane
Conveyor Height	900+/-20mm		Components Clearance	Top/ Bottom is 25mm
Conveyor Speed Range	300~2000mm/mi		Number of Cooling Zones	2
Fixed Rail Side	Front Fixed (Option:Rear Fixed)		Process Data & Status Storage	S
Cooling Method	Forced-Air Motor and fan (Standard)		Max.Temp.Gap	80°C

**Unloader**



- 1.Strong,firm and stable design.
- 2. Simple, convenient and doesn't take up space.
- 3.Adjustable speed.

Dimension(mm)	500*450*950
PCB Width (mm)	50-350mm
Time Feed PCB	0-1500mm/sec
Power	Max 200 VA
PCB Direction	L to R
Power Supply	1 PH AC 220V 50/60Hz
Weight	120 Kg

Thanks for contacting with ETA.  
ETA looks forward to win-win cooperation.